



Bidding starts now and ends on Dec. 20.

Bidding will be in \$100 increments up to \$1,000, then \$200 increments from there.

We will not sell any gilts without checking with the previous bidder.

Buyers will be provided with the name and number of the contending bidder upon request.

Gilt viewing is welcome by appointment.

For a thorough phenotypic description of gilts, call Mike at 618.791.7904.

All gilts in this sale were mated to produce high-quality showpigs and are sound, smooth-topped, well-balanced, good-designed gilts.

Gilts can be picked up at the farm after purchase or call Mike to make delivery arrangements.



Cedar Ridge Farms  
5534 Cedar Ridge Lane  
Red Bud, IL 62278

### Selling by Phone Auction Format

Enclosed you will find all information on 107 bred females that are bred to produce outstanding show hogs. Each gilt has a starting bid listed with their information. To bid on any of these gilts, please call any of the numbers listed below.

- Farm Office (Angie): 618.473.2325
- Mike Cell: 618.791.7904
- Jim Marquart Cell: 618.340.6776



# BRED GILT SALE

## Starting now-Dec. 20

Phone auction format

### Selling more than 100 bred females

- Crossbreds • Yorkshires
- Hampshires • Durocs • Landrace

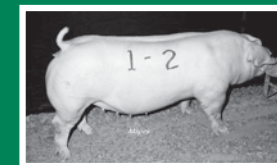
### *Gilts like these will sell!*



\$3,300 Top-selling Champion  
Hampshire Gilt, 2008 SWTC



\$5,000 Reserve Champion  
Yorkshire Gilt, 2009 SWTC



Champion Landrace Gilt, 2011 NBS®



Top-selling \$5,400 Grand Champion  
Duroc Gilt, 2008 NSR Fall Classic

### DUROC GILTS BRED FOR PUREBRED LITTERS

EN	FARROWED	PARITY	SIRE	SIRE OF DAM	SERVICE SIRE	T14 DUE DATE	STARTING BID
11-8	8/23/2009	P3	IMAX 145-2	POWER HOUSE 20-4	POWER WAGON 99-2	2/17/2012	\$500
2-7	1/3/2010	P2	IMAX 145-2	REAL DEAL 149-2	POWER WAGON 99-2	1/17/2012	\$500
10-10	7/31/2010	GILT	MAXIMUS 4-4	BOLD STROKE 57-1	GLADIATOR 25-4	1/7/2012	\$500
11-6	7/31/2010	P1	MAXIMUS 4-4	BOLD ADVENTURE 6-1	POWER WAGON 99-2	1/26/2012	\$500
19-4	8/22/2010	P1	MAXIMUS 4-4	IMAX 145-2	POWER WAGON 99-2	2/2/2012	\$500
4-7	2/19/2011	GILT	MAXIMUS 4-4	REAL DEAL 149-2	GLADIATOR 25-4	3/2/2012	\$500

### HAMPSHIRE GILTS BRED FOR PUREBRED LITTERS

EN	FARROWED	PARITY	SIRE	SIRE OF DAM	SERVICE SIRE	T14 DUE DATE	STARTING BID
13-6	4/1/2010	P1	HEAVY METAL 2-1	KONG 6-2	SUNAMI 26-3	1/30/2012	\$500
15-4	4/5/2010	GILT	STAINLESS STEEL 54-11	KING KONG 63-4	SUNAMI 26-3	1/26/2012	\$500
16-5	4/10/2010	P1	STAINLESS STEEL 54-11	MEAN MASTER 8-2	SUNAMI 26-3	12/29/2011	\$500
19-3	5/3/2010	P1	HEAVY METAL 2-1	STAINLESS STEEL 54-11	OPTIMUS PRIME 5-2	1/18/2012	\$500
21-4	5/9/2010	P1	STAINLESS STEEL 54-11	KONG 6-2	SUNAMI 26-3	1/15/2012	\$500
22-7	5/10/2010	P1	STAINLESS STEEL 54-11	DOZER 29-3	REAL DEAL 25-1	1/12/2012	\$500
22-4	5/10/2010	P1	STAINLESS STEEL 54-11	DOZER 29-3	SUNAMI 26-3	1/15/2012	\$500
22-6	5/10/2010	P1	STAINLESS STEEL 54-11	DOZER 29-3	SUNAMI 26-3	1/25/2012	\$500
24-10	6/1/2010	P1	STAINLESS STEEL 54-11	PLAYIN 4 KEEPS 95-6	BRADDOCK 18-1	2/12/2012	\$500
24-6	6/1/2010	P1	STAINLESS STEEL 54-11	PLAYIN 4 KEEPS 95-6	SUNAMI 26-3	1/9/2012	\$500
24-9	6/1/2010	P1	STAINLESS STEEL 54-11	PLAYIN 4 KEEPS 95-6	SUNAMI 26-3	1/14/2012	\$500
6-6	8/4/2010	GILT	STAINLESS STEEL 54-11	BIG FOOT 10-4	REAL DEAL 25-1	1/17/2012	\$500
6-10	8/4/2010	GILT	STAINLESS STEEL 54-11	BIG FOOT 10-4	SUNAMI 26-3	12/28/2011	\$500
8-6	8/11/2010	GILT	STAINLESS STEEL 54-11	MEAN MASTER 8-2	BRADDOCK 18-1	2/5/2012	\$500
8-7	8/11/2010	GILT	STAINLESS STEEL 54-11	MEAN MASTER 8-2	REAL DEAL 25-1	1/26/2012	\$500
11-5	8/22/2010	P1	OPTIMUS PRIME 5-2	STAINLESS STEEL 54-11	REAL DEAL 25-1	1/12/2012	\$500
21-8	9/15/2010	P1	CHUCK NORRIS 4-2	STAINLESS STEEL 54-11	REAL DEAL 25-1	1/16/2012	\$500
21-6	9/15/2010	GILT	CHUCK NORRIS 4-2	STAINLESS STEEL 54-11	OPTIMUS PRIME 5-2	2/4/2012	\$500
22-12	10/2/2010	GILT	OPTIMUS PRIME 5-2	MEAN MASTER 8-2	CHUCK NORRIS 17-2	1/15/2012	\$500
22-10	10/2/2010	GILT	OPTIMUS PRIME 5-2	MEAN MASTER 8-2	SUNAMI 26-3	1/2/2012	\$500
27-6	11/25/2010	GILT	OPTIMUS PRIME 5-2	STAINLESS STEEL 54-11	REAL DEAL 25-1	2/16/2012	\$500
28-4	12/25/2010	GILT	OH YEAH 3-9	STAINLESS STEEL 54-11	REAL DEAL 25-1	2/16/2012	\$500
28-5	12/25/2010	GILT	OH YEAH 3-9	STAINLESS STEEL 54-11	WALKER 8-1	2/9/2012	\$500
3-3	1/26/2011	GILT	CHUCK NORRIS 4-2	HOLY COW 85-4	OPTIMUS PRIME 5-2	2/17/2012	\$500
3-4	1/26/2011	GILT	CHUCK NORRIS 4-2	HOLY COW 85-4	SUNAMI 26-3	2/12/2012	\$500

### LANDRACE GILTS BRED FOR PUREBRED LITTERS

EN	FARROWED	PARITY	SIRE	SIRE OF DAM	SERVICE SIRE	T14 DUE DATE	STARTING BID
5-5	1/11/2010	P2	PSSS ZEUS 40-8	SAMSON 287-4	EXCELLERATOR 119-3	1/1/2012	\$500
5-4	8/14/2010	P1	HERCULES 11-2	PIKKUS 456-1	EXCELLERATOR 119-3	1/19/2012	\$500
3-7	8/14/2010	P1	HERCULES 11-2	AB 458-2	452-1 DYNAMITE	1/30/2012	\$500
7-7	9/1/2010	P1	HERCULES 11-2	SUPREME 8-2	WHITE KNIGHT 98-1	1/26/2012	\$500
13-13	9/30/2010	P1	GOLIATH 3-1	PSSS ZEUS 40-8	EXCELLERATOR 119-3	3/2/2012	\$500
16-8	11/12/2010	GILT	GOLIATH 3-1	PSSS ZEUS 40-8	EXCELLERATOR 119-3	1/8/2012	\$500
16-9	11/12/2010	GILT	GOLIATH 3-1	PSSS ZEUS 40-8	EXCELLERATOR 119-3	3/2/2012	\$500
17-6	12/1/2010	GILT	GOLIATH 3-1	SAMSON 494-1	EXCELLERATOR 119-3	1/22/2012	\$500
17-7	12/1/2010	GILT	GOLIATH 3-1	SAMSON 494-1	ABIKKUS 123-2	1/15/2012	\$500
17-10	12/1/2010	GILT	GOLIATH 3-1	SAMSON 494-1	16-1 FLASH	1/13/2012	\$500
2-7	1/15/2011	GILT	HERCULES 11-2	SUPREME 8-2	EXCELLERATOR 119-3	2/16/2012	\$500
2-8	1/15/2011	GILT	HERCULES 11-2	SUPREME 8-2	ABIKKUS 123-2	2/16/2012	\$500
3-10	1/16/2011	GILT	HERCULES 11-2	SUPREME 8-2	EXCELLERATOR 119-3	2/16/2012	\$500
4-7	1/26/2011	GILT	FLASH 16-1	AB 458-2	ABIKKUS 123-2	2/3/2012	\$500
5-8	2/2/2011	GILT	SAMSON 287-4	SUPREME 8-2	EXCELLERATOR 119-3	2/25/2012	\$500
5-9	2/2/2011	GILT	SAMSON 287-4	SUPREME 8-2	EXCELLERATOR 119-3	2/17/2012	\$500
13-11	9/30/2011	GILT	GOLIATH 3-1	PSSS ZEUS 40-8	ABIKKUS 123-2	1/30/2011	\$500

### YORKSHIRE GILTS BRED FOR PUREBRED LITTERS

EN	FARROWED	PARITY	SIRE	SIRE OF DAM	SERVICE SIRE	T14 DUE DATE	STARTING BID
20-3	11/12/2010	GILT	I GOT IT 18-1	ANIMAL HOUSE 81-5	CYCLONE 1-1	2/3/2012	\$500
2-4	1/19/2011	GILT	HEAVY METAL 19-2	CUSTOM MADE 55-1	CYCLONE 1-1	2/5/2012	\$500
2-7	1/19/2011	GILT	HEAVY METAL 19-2	CUSTOM MADE 55-1	CYCLONE 1-1	2/25/2012	\$500
4-5	1/24/2011	GILT	HEAVY METAL 19-2	CAPTAIN 61-2	CYCLONE 1-1	2/2/2012	\$500
4-6	1/24/2011	GILT	HEAVY METAL 19-2	CAPTAIN 61-2	CYCLONE 1-1	2/28/2012	\$500
4-9	1/24/2011	GILT	HEAVY METAL 19-2	CAPTAIN 61-2	CYCLONE 1-1	3/4/2012	\$500
6-7	1/25/2011	GILT	HEAVY METAL 19-2	ANIMAL HOUSE 67-1	CYCLONE 1-1	2/10/2012	\$500
7-8	1/26/2011	GILT	BEARCAT 7-2	MAGNUM EXPRESS 18-1	CYCLONE 1-1	2/27/2012	\$500
9-8	2/13/2011	GILT	BEARCAT 7-2	CAPTAIN 61-2	CYCLONE 1-1	2/16/2012	\$500

### CROSSBRED GILTS BRED FOR CROSSBRED LITTERS

EN	FARROWED	PARITY	TYPE	SIRE	SIRE OF DAM	SERVICE SIRE	T14 DUE DATE	STARTING BID
9-2	1/25/2010	P1	H x Y F1	BEARCAT 11-1	CUSTOM MADE 55-1	CHUCK NORRIS 17-2	12/31/2011	\$500
11-5	2/12/2010	P1	H x Y F1	BEARCAT 11-1	CAPTAIN 61-2	CHUCK NORRIS 17-2	1/11/2012	\$500
11-9	2/12/2010	P1	H x Y F1	BEARCAT 11-1	CAPTAIN 61-2	REAL DEAL 25-1	1/14/2012	\$500
12-9	4/26/2010	P1	H x Y F1	STAINLESS STEEL 54-11	CAPTAIN 61-2	CHUCK NORRIS 17-2	1/2/2012	\$500
13-8	4/28/2010	P1	H x Y F1	STAINLESS STEEL 54-11	CAPTAIN 61-2	SUNAMI 26-3	1/25/2012	\$500
4-6	7/1/2010	P1	H x Y F1	STAINLESS STEEL 54-11	CAPTAIN 61-2	CHUCK NORRIS 17-2	1/10/2012	\$500
1-2	7/1/2010	P1	HY F1	STAINLESS STEEL 54-11	YORK	SUNAMI 26-3	1/14/2012	\$500
5-11	7/9/2010	P1	H x Y F1	OPTIMUS PRIME 5-2	CUSTOM MADE 55-1	WALKER 8-1	2/9/2012	\$500
5-10	7/9/2010	P1	H x Y F1	OPTIMUS PRIME 5-2	CUSTOM MADE 55-1	SUNAMI 26-3	1/8/2012	\$500
6-6	7/11/2010	P1	H x Y F1	HAMP	TRUE MASTERPIECE 7-3	SUNAMI 26-3	1/26/2012	\$500
7-9	8/8/2010	P1	H x Y F1	STAINLESS STEEL 54-11	TRUE MASTERPIECE 7-3	CHUCK NORRIS 17-2	1/26/2012	\$500
13-3	9/11/2010	GILT	H x (H x (H x Y F1))	OPTIMUS PRIME 5-2	STAINLESS STEEL 54-11	SUNAMI 26-3	1/9/2012	\$500
13-5	9/11/2010	GILT	H x (H x (H x Y F1))	OPTIMUS PRIME 5-2	STAINLESS STEEL 54-11	SUNAMI 26-3	12/30/2011	\$500
15-3	9/29/2010	GILT	H x Y F1	OPTIMUS PRIME 5-2	CAPTAIN 61-2	CHUCK NORRIS 17-2	1/11/2012	\$500
15-6	9/29/2010	GILT	H x Y F1	OPTIMUS PRIME 5-2	CAPTAIN 61-2	CHUCK NORRIS 17-2	1/8/2012	\$500
15-4	9/29/2010	GILT	H x Y F1	OPTIMUS PRIME 5-2	CAPTAIN 61-2	SUNAMI 26-3	1/30/2012	\$500
15-5	9/29/2010	GILT	H x Y F1	OPTIMUS PRIME 5-2	CAPTAIN 61-2	SUNAMI 26-3	2/2/2012	\$500
17-4	10/11/2010	GILT	H x Y F1	OPTIMUS PRIME 5-2	BULLET PROOF	CHUCK NORRIS 17-2	1/17/2012	\$500
17-6	10/11/2010	GILT	H x Y F1	OPTIMUS PRIME 5-2	BULLET PROOF	CHUCK NORRIS 17-2	1/13/2012	\$500
18-7	10/11/2010	GILT	H x Y F1	OPTIMUS PRIME 5-2	CAPTAIN 61-2	CHUCK NORRIS 17-2	12/31/2011	\$500
18-8	10/11/2010	GILT	H x Y F1	OPTIMUS PRIME 5-2	CAPTAIN 61-2	CHUCK NORRIS 17-2	1/22/2012	\$500
18-9	10/11/2010	GILT	H x Y F1	OPTIMUS PRIME 5-2	CAPTAIN 61-2	CHUCK NORRIS 17-2	1/11/2012	\$500
17-3	10/11/2010	GILT	H x Y F1	OPTIMUS PRIME 5-2	BULLET PROOF	REAL DEAL 25-1	2/16/2012	\$500
20-5	11/14/2010	GILT	H x Y F1	OPTIMUS PRIME 5-2	BULLET PROOF	CHUCK NORRIS 17-2	1/7/2012	\$500
20-6	11/14/2010	GILT	H x Y F1	OPTIMUS PRIME 5-2	BULLET PROOF	CHUCK NORRIS 17-2	1/26/2012	\$500
20-4	11/14/2010	GILT	H x Y F1	OPTIMUS PRIME 5-2	BULLET PROOF	SUNAMI 26-3	1/4/2012	\$500
21-2	11/25/2010	GILT	H x Y F1	OPTIMUS PRIME 5-2	BULLET PROOF	SUNAMI 26-3	1/28/2012	\$500
22-8	12/13/2010	GILT	H x Y F1	OPTIMUS PRIME 5-2	CUSTOM MADE 55-1	CHUCK NORRIS 17-2	12/31/2011	\$500
1-7	1/10/2011	GILT	BLACK EXOTIC x (H x Y F1)	FIRST BLOOD 43-1	STAINLESS STEEL 54-11	WALKER 8-1	2/3/2012	\$500
1-8	1/10/2011	GILT	BLACK EXOTIC x (H x Y F1)	FIRST BLOOD 43-1	STAINLESS STEEL 54-11	WALKER 8-1	2/2/2012	\$500
4-7	2/3/2011	GILT	CROSS x Y	FIRST BLOOD 43-1	MAC A ROO 307-1	CHUCK NORRIS 17-2	1/30/2012	\$500
4-10	2/3/2011	GILT	CROSS x Y	FIRST BLOOD 43-1	MAC A ROO 307-1	OPTIMUS PRIME 5-2	2/16/2012	\$500
6-8	2/14/2011	GILT	BLACK EXOTIC x (H x Y F1)	FIRST BLOOD 43-1	STAINLESS STEEL 54-11	BRADDOCK 18-1	2/16/2012	\$500
6-6	2/14/2011	GILT	BLACK EXOTIC x (H x Y F1)	FIRST BLOOD 43-1	STAINLESS STEEL 54-11	SUNAMI 26-3	3/3/2012	\$500
11-8	2/25/2011	GILT	CROSS x D x H F1	FIRST BLOOD 43-1	BOLD STROKE 57-1	BRADDOCK 18-1	3/4/2012	\$500
11-9	2/25/2011	GILT	CROSS x D x H F1	FIRST BLOOD 43-1	BOLD STROKE 57-1	WALKER 8-1	2/16/2012	\$500
14-8	3/13/2011	GILT	BLACK EXOTIC x H	FIRST BLOOD 43-1	HOLY COW 85-4	WALKER 8-1	2/19/2012	\$500

### ELITE BRED FEMALES FROM OUR KEEPER PENS

BREED	EN	FARROWED	PARITY	TYPE	SIRE	SIRE OF DAM	SERVICE SIRE	T14 DUE DATE	STARTING BID
Duroc	15-8	8/10/2010	GILT		SPARTICUS 11-4	RED KING 22-1	GLADIATOR 25-4	1/19/2012	\$2,000
Duroc	1-9	1/23/2011	GILT		MAXIMUS 4-4	IMAX 145-2	POWER WAGON 99-2	2/11/2012	\$2,000
Hampshire	4-10	1/20/2010	P1		BURLY 3-2	KING KONG 63-4	CHUCK NORRIS 17-2	1/11/2012	\$2,000
Hampshire	11-3	8/22/2010	GILT		OPTIMUS PRIME 5-2	STAINLESS STEEL 54-11	WALKER 8-1	2/3/2012	\$1,000
Hampshire	14-5	8/30/2010	GILT		CHUCK NORRIS 4-2	STAINLESS STEEL 54-11	OPTIMUS PRIME 5-2	1/7/2012	\$2,000
Hampshire	14-8	8/30/2010	GILT		CHUCK NORRIS 4-2	STAINLESS STEEL 54-11	REAL DEAL 25-1	1/26/2012	\$2,000
Hampshire	14-6	8/30/2010	GILT		CHUCK NORRIS 4-2	STAINLESS STEEL 54-11	REAL DEAL 26-3	2/7/2012	\$2,000
Hampshire	15-5	8/31/2010	GILT		CHUCK NORRIS 4-2	STAINLESS STEEL 54-11	OPTIMUS PRIME 5-2	12/31/2011</	